

Installation Instructions for EZflow Systems in Idaho



The Idaho Department of Environmental Quality has issued approval of Infiltrator Systems Inc. 10-inch and 12-inch diameter **EZflow** products for use in Idaho under the “Gravelless System” section of the *Technical Guidance Manual* (TGM). Vertical design configurations must comply with the “Extra Drainrock” section of the TGM. The **EZflow** 10-inch and 12 inch diameter products must meet or exceed Idaho’s requirements for septic system gravelless trench components and comply with Title 1, Chapter 3, *Rules for Individual and Subsurface Sewage Disposal*. The approved **EZflow** products are:

1. The **EZflow** 1201P product is 12 inches in diameter by 10 feet long, containing a 4-inch perforated pipe surrounded by EPS aggregate.
2. The **EZflow** 1202H product is 12 inches in diameter by 10 feet long. One of the polyethylene net bundles contains expanded polystyrene aggregate only and one contains a four-inch pipe surrounded by EPS aggregate.
3. The **EZflow** 1203H product is 12 inches in diameter by 10 feet long. Two of the polyethylene net bundles contain expanded polystyrene aggregate only and one contains a four-inch pipe surrounded by EPS aggregate.

Materials and Equipment needed

- **EZflow** Bundles
- **EZflow** Barrier Paper
- **EZflow** Internal Pipe Couplers (only Hancor 4” Internal Couplers or couplers approved by manufacturer)
- Pipe for Header and Inlet
- Backhoe/Excavator
- Laser, Transit, or Level
- Shovel & Rake

Installation Instructions for **EZflow**

Unless otherwise specified or indicated in diagrams, **EZflow** drainfields shall be installed in accordance with Idaho Technical Guidance Manual for Individual and Subsurface Sewage Disposal.

1. Information from site evaluation is used to determine the required square feet of a 3 ft. wide gravel trench.
2. Trench length is determined by multiplying the square feet required for a 3 ft. gravel trench by the factor provided with the diagram by **EZflow**. Trench depth, width, and layout are determined from the installation cross section size shown in the diagram and from the requirements of the Technical Guidance Manual.

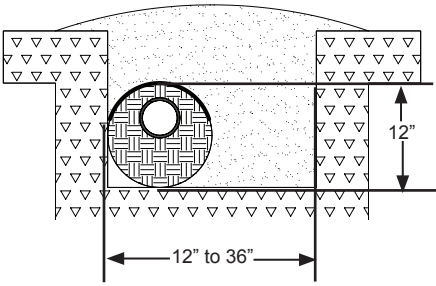
3. All **EZflow** drainfields are adaptable to serial and drop box distribution in accordance with requirements for gravel trenches. All drainfields are adaptable to low pressure pipe distribution, dosing, and pump-up systems.
4. Trench systems are preferred due to increased sidewall; however, the 12-inch diameter bundle(s) may be used in bed systems and mound systems. Spacing of bundle(s) with 4-inch perforated pipe shall be in accordance with the Manual requirements for gravel. Sizing shall be the same as for gravel systems.
5. The plastic shipping bags are removed before the ten-foot long bundles are placed in trench(es).
6. Bundles that contain aggregate only are butted end to end. Bundles containing 4-inch perforated pipe are joined end to end with internal pipe couplings available from **EZflow**.
7. When trench is wider than the installation configuration, suitable stakes may be used to hold bundles in place during backfilling. For spacing of the stakes along the trench, 5 to 8 feet is suggested. An alternate method is to place backfill against the bundle before backfilling the rest of the trench.
8. Only the top of the upper bundle(s) should be covered with untreated 60 lb. building paper. Geo-textile may be used across the top of the bundle(s). The geotextile fabric shall not drape over the sides of the product beyond one third of the product height. A cover is necessary in sandy soils.
9. Backfills shall be of native soil. Soil within 6” of the bundle shall be loosely placed and not compacted. The trench top shall be shaped to ensure surface water runoff. Minimum cover over the aggregate bundles shall be 12 inches.

Repeat steps 1 thru 9 for each required trench.

Approved EZflow Products

EZflow 1201P

May be used with Low Pressure Pipe Distribution

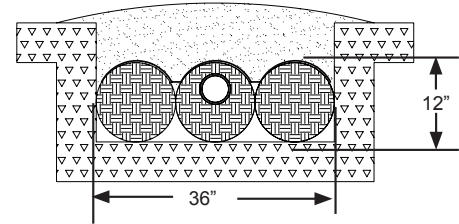


Sizing Equivalent for 1201P System

$$\text{_____ sq ft.} \div 1.33 = \text{_____ linear ft.}$$

EXAMPLE: 300 sq ft. required.
 $300 \div 1.33 = 225$ lf. Use 225 lf.

EZflow 1203H

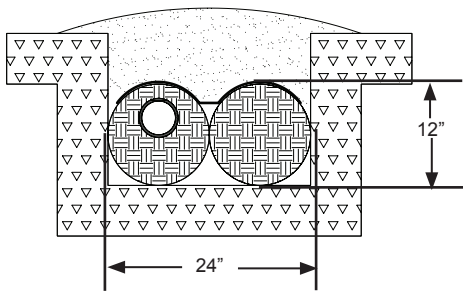


Sizing Equivalent for 1203H System

$$\text{_____ sq ft.} \div 4.00 = \text{_____ linear ft.}$$

EXAMPLE: 300 sq ft. required.
 $300 \div 4.00 = 75$. Use 75 lf.

EZflow 1202H



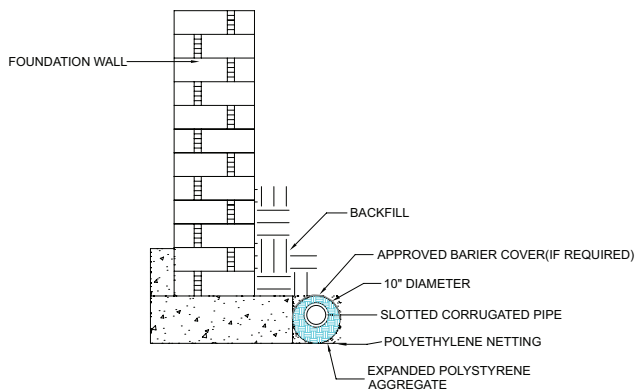
Sizing Equivalent for 1202H System

$$\text{_____ sq ft.} \div 2.67 = \text{_____ linear ft.}$$

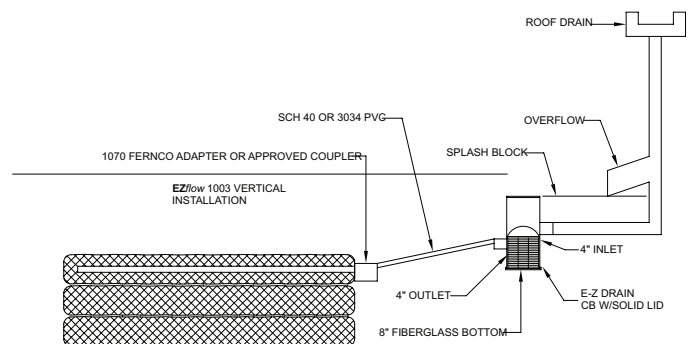
EXAMPLE: 300 sq ft. required.
 $300 \div 2.67 = 112$ lf. Use 112 lf.

Product Specifications	1201-P	1202H	1203H
Overall System Height	12"	12"	12"
Trench Width	12"-36"	24"	36"
Minimum Cover	12"	12"	12"
Rating	1.33	2.67	4.00
Maximum Trench Modification	25%	15%	25%

EZflow Foundation Drain Detail

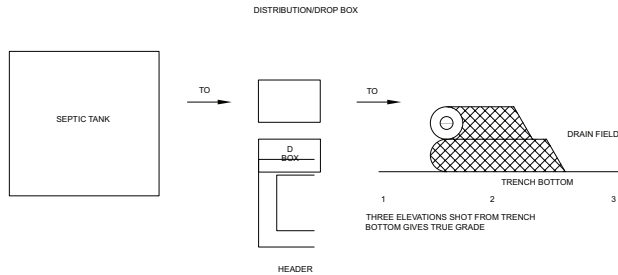


EZflow Roof Drain Recharge System



As required by state or local regulations, be sure to obtain proper installation inspection from the health department prior to covering the system.

EZflow Inspection

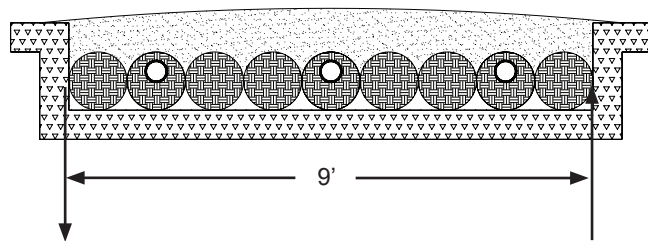


Four inch septic pipe units are self leveling. Units are engineered with holes at 12, 4 & 8 o'clock. Barrier over systems, if required, shall be of untreated building paper or manufacturer approved geotextile.

After the system has been completely covered, only drive across the trenches when necessary. never drive along the trench lines. To avoid additional soil compaction, prevent any heavy equipment from driving across or along the trench lines.

Sod or seed the drainfield area to control erosion, as may be required by Permit or local policy.

1209 Bed System



1209 Horizontal drainfield system may be used in a bed system with the three cylindrical bundles placed in rows next to each other. This system will replace the conventional method at a ratio of one to one or health department recommendation. The convenience of this system can help determine the exact layout and cost, as well as saving on installation time.



INFILTRATOR[®]
systems inc.

6 Business Park Road • Old Saybrook, CT 06475 • 800.689.7759