

# Installation Instructions for EZflow Systems in Michigan



Michigan local health departments must approve the use of proprietary products in accordance with the requirements of their individual sanitary codes. However, Michigan Department of Environmental Quality (MDEQ) has reviewed **EZflow** for compliance with *Criteria for Subsurface Sewage Disposal (04/94)*, and has agreed that **EZflow** products can be sized on a 1:1 basis with aggregate trench or absorption bed systems with the following comments for the specific product configurations:

- **1201P:** This configuration is a single 12-inch diameter product. MI DEQ does not object to its application at an equivalent one square foot of bottom area per lineal foot.
- **1202V:** This configuration consists of two 12 inch diameter units stacked vertically, intended to compare with a deep trench system as allowed for under Section C 10 Criteria. MI DEQ does not object to its application at 3 square feet per lineal foot for deep trench installation.
- **1203H:** This configuration consists of three 12" diameter units installed side by side horizontally. MI DEQ does not object to its application equivalent to a 3 foot wide gravel trench on a lineal foot to lineal foot basis. This configuration can also be replicated in a bed configuration with each lineal foot being equivalent to three square feet of required bottom area.

A single pipe bundle contains a four inch perforated pipe surrounded by EPS aggregate and is held together with polyethylene netting. A single aggregate bundle contains aggregate only and is held together with polyethylene netting.

## Materials and Equipment needed

- **EZflow** Bundles
- **EZflow** Barrier Paper
- **EZflow** Internal Pipe Couplers
- Pipe for Header and Inlet
- Backhoe/Excavator

## Installation Instructions

The instructions for installation of **EZflow** products are given below. All sites must meet the [Site & Soil Conditions](#) & [Location & Isolation distances](#) as noted in the Criteria or County Code as applicable.

1. After the local health department has determined sizing, configuration, and layout for the **EZflow** systems, stake or mark with paint the location of trenches and lines. Be careful to set correct tank, invert pipe, header line or distribution box and trench bottom elevations before installation of pipe bundles.
2. Construction should not be undertaken when soils are saturated from heavy rains or snow melt, or when soils are frozen, unless specific approval is granted by the reviewing agency.
3. Excavate trench to approved depth. Smearing of sidewall and bottom surfaces during construction is to be avoided. Smear soil surface should be raked to remove glazing.

4. Place **EZflow** bundle(s) in the **EZflow** configuration approved by system design permit specified for the particular site. The top or center-most bundles containing pipe are joined end to end with an internal pipe coupler. Any additional aggregate only bundles that may be required, should be butted against the other aggregate-only bundles and do not require any type of connection.
5. Remove plastic **EZflow** stretch wrap prior to placing bundles in the trench(es). Remove any plastic wrap in the trench before system is covered.
6. Soil within 12" of the cylinders, in trenches, shall be loosely placed and not compacted.
7. The bottom of each absorption system trench should be laid as close to level as possible but not to exceed a grade of two inches fall in 100 feet per Criteria or County Code as applicable.
8. **EZflow** EPS bundles are flexible and can fit in curved trenches as may be necessary to avoid trees, boulders, or other obstacles.
9. Trench Systems shall have a minimum of 4' of undisturbed earth between trench walls. For Bed Systems, a maximum of 6' on center may be provided between laterals.
10. The **EZflow** Drainfield Systems should be installed with the contour of the ground surface elevation (uniform depth), with all continuous adjoining 10-foot cylindrical bundles placed end to end, with central bundle distribution pipe interconnected, without any dams, or other water stops.
11. All EPS bundles should be covered across the top only with untreated building paper or other approved porous material.
12. Check with local health department, prior to covering, for required inspections.
13. A minimum of 12" and a maximum of 24" of suitable earth cover shall be placed over the **EZflow** EPS bundles.
14. The trench top shall be graded such that water will not pond and compacted to the maximum degree possible with a backhoe bucket. Backfill should be seeded or sodded immediately after completion to reduce erosion.

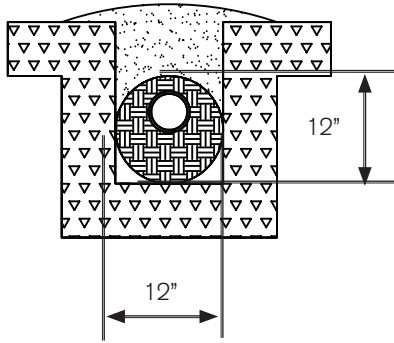
Repeat steps 1 through 14 as needed.

## Reserve Area

Sufficient suitable area shall be available and reserved to provide for a minimum of one replacement system without utilization or disruption of the initial installation.

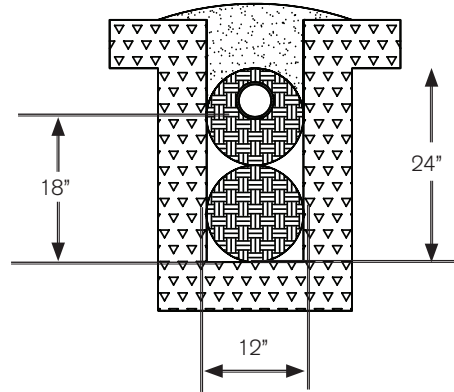
# Approved EZflow Products

**EZflow 1202P**



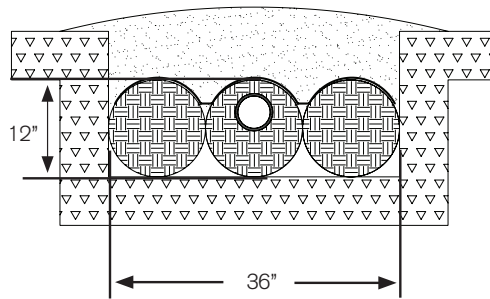
**SIZING EXAMPLE:** - 300 sq ft. required  
300 sf X 1.0 = 300 lf required

**EZflow 1202V Deep Trench**



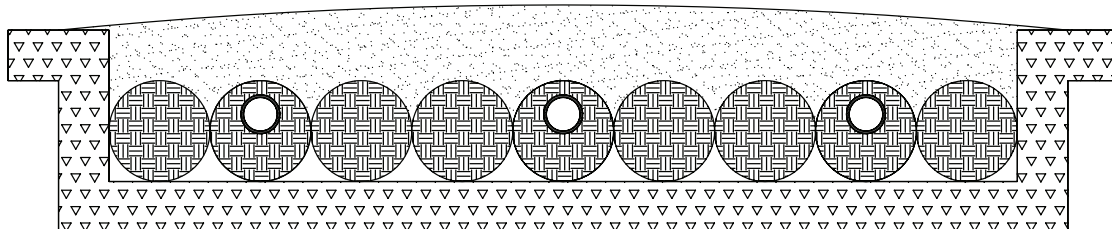
**SIZING EXAMPLE:** - 300 sq ft. required  
300 sf X 0.6 = 180 lf required

**EZflow 1203H**



**SIZING EXAMPLE:** - 300 sf required  
300 sf X 0.333 = 100 lf required

**EZflow 1203H BED**



Repeat 1203H configurations until required bed size is met.

## EZflow Inspection

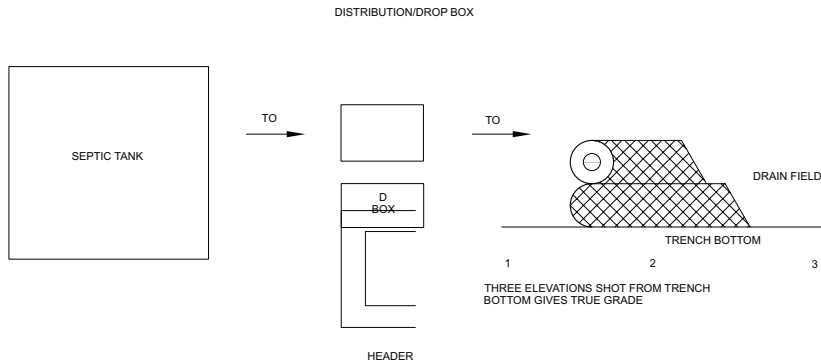
An inspection by the county or district health department may be required after the sewage disposal system has been completed but before any portion of the system has been covered or placed in operation. It is the responsibility of the contractor, homeowner, or installer to notify the local health jurisdiction that the sewage disposal system is ready for inspection.

Septic tank, header pipe or D box, trench bottom, grade, depth, and cover shall be in accordance with state Criteria and county sanitary code unless otherwise specified.

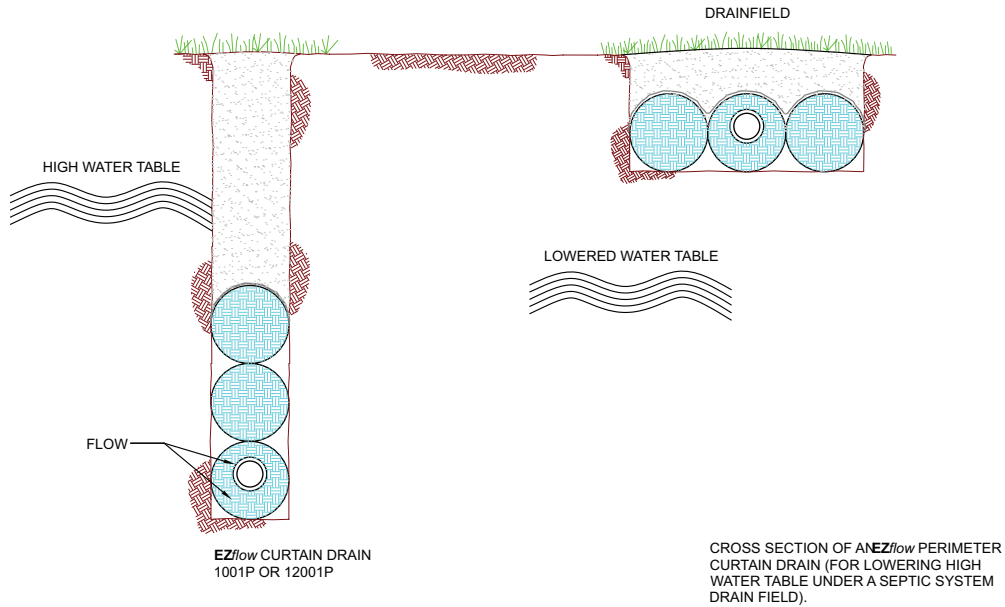
Barrier over systems, if required, shall be of untreated building paper or manufacturer approved geotextile.

### Sizing

The Absorption area (SF) necessary for a given site shall be sized based on maximum daily sewage flow (GPD) and the Permeability for the site. The total length of the trench required shall be determined by dividing the total absorption area (SF) required by the SF/FT of the product configuration being installed.



## Perimeter Curtain Drain





**INFILTRATOR®**  
systems inc.

6 Business Park Road • Old Saybrook, CT 06475 • 800.689.7759