

# Installation Instructions for EZflow Systems in Texas



## Standard Absorptive Drainfields

The Texas Commission on Environmental Quality has approved for use in Texas the **EZflow** 1003T. The sizing formulas for two-foot wide and three-foot wide trenches with and without low-flow water saving devices are shown in the examples on the following page.

The polystyrene aggregate to be used is the **EZflow** "bead". The **EZflow** polystyrene aggregate "bead" is approved as a substitute for the block-shaped polystyrene aggregate.

The **EZflow** Model 1003T will only be allowed for use at sites with suitable soils (Class Ib, II, or III) and where standard absorptive drainfields are permitted under 30 Texas Administrative Code §285.33(b).

Only a Class Ib, II, or III soil can be used to backfill according to the requirements in §285.33(b)(1)(E).

## Other Absorptive Drainfields

The Texas Commission on Environmental Quality found that the **EZflow** 1003T system can be used instead of media in evapotranspirative (ET), low pressure dosed drainfields, and soil substitution drainfields; however, the size of the drainfield shall not be reduced from the area required in the rules for those systems.

The absorption field product should be installed in 24 to 36 inch wide trenches with shallow trench bottom depths of 24 to 36 inches recommended. The most suitable backfill material available should be used. Clay backfill is not recommended. The backfill should be mounded over the trench to allow for settling and ensure a minimum of six inches of cover as specified by the manufacturer.

### Materials and Equipment needed

- **EZflow** Bundles
- **EZflow** Internal Pipe Couplers
- End Caps if needed
- Backhoe
- Laser, Transit, or Level
- Shovel & Rake

1. The **EZflow** assemblies are 10 inches in diameter by 10 feet long. The polyethylene net cylinders contain a four inch perforated pipe surrounded by EPS aggregate. In cases where linear footage required is not in multiples of 10, the installer may (a) reduce the product to the needed length and refasten the netting to the pipe or, (b) use an additional 10 feet of product to exceed the required trench length.

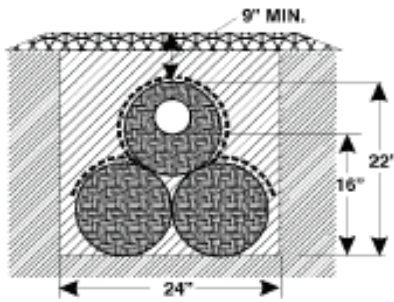
2. When installed in a trench, the trench should be dug to a width of 24 inches or 36 inches. This not only saves labor in excavation, but also provides better load-bearing capacity after backfilling is complete.
3. The bottom of the excavation shall be level to within one inch over each 25 feet of excavation or within three inches over the entire excavation, whichever is less.
4. The plastic stretch wrap should be removed before the ten foot long cylinders are placed in the trench(es).
5. If the soil backfill to be used is granular, cohesionless soil (such as fine dry sand), it may be desirable to place a barrier over the assembly to prevent the soil from infiltrating the system.
6. The cylinders containing 4-inch perforated pipe are joined end to end with an internal coupling available from **EZflow**. The same internal coupler is used to start the trench, as it will slide inside the 4-inch PVC pipe.
7. No attempt should be made to compact soil until the depth of cover over the assembly is at least six inches. Before this minimum cover, soil compaction is not possible and not desirable due to reduced permeability at all soil interface.
8. As required by state or local regulations, be sure to obtain proper installation inspection from the health department prior to covering the system.
9. After the system has been completely covered, only drive across the trenches when necessary. Never drive along the trench lines. To avoid additional soil compaction, prevent any heavy equipment from driving across or along the trench lines.

Repeat steps 1 thru 9 for each required trench.

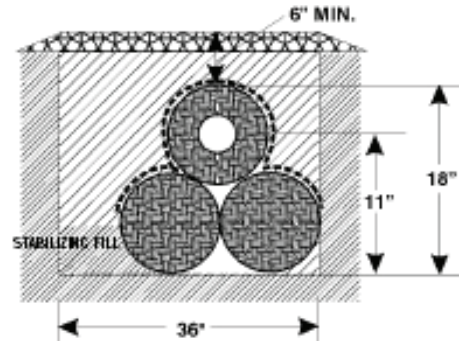
## Approved EZ<sub>flow</sub> Products

### EZ<sub>flow</sub> 1003T/1003T-GEO

Two-Foot Wide Trench



Three-Foot Wide Trench



## Standard Absorptive Drainfields

Sizing Example: 3 Bedroom Single Family Dwelling in a Class II Soil

Sizing Equivalent for a 1200 sq ft 1003T System  
Absorption Area Calculated Without Water Saving Devices

For 24" wide trench:  
 $1200\text{sf} / 4\text{ft} * 0.53 = 159\text{ft}$   
**159ft required**

For 36" wide trench:  
 $1200\text{sf} / 5\text{ft} * 0.66 = 159\text{ft}$   
**159ft required**

Sizing Equivalent for a 960 sq ft 1003T System  
Absorption Area Calculated With Water Saving Devices

For 24" wide trench:  
 $960\text{sf} / 4\text{ft} * 0.66 = 159\text{ft}$   
**159ft required**

For 36" wide trench:  
 $960\text{sf} / 5\text{ft} * 0.83 = 159\text{ft}$   
**159ft required**

## Other Absorptive Drainfields

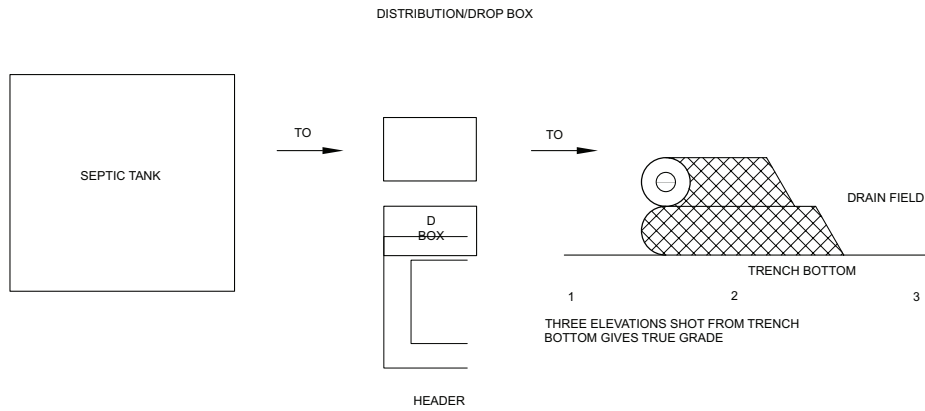
- Evapotranspirative (ET) systems
- Low-pressure dosed drainfields
- Soil Substitution drainfields

These systems are on a foot for foot basis with no reduction.

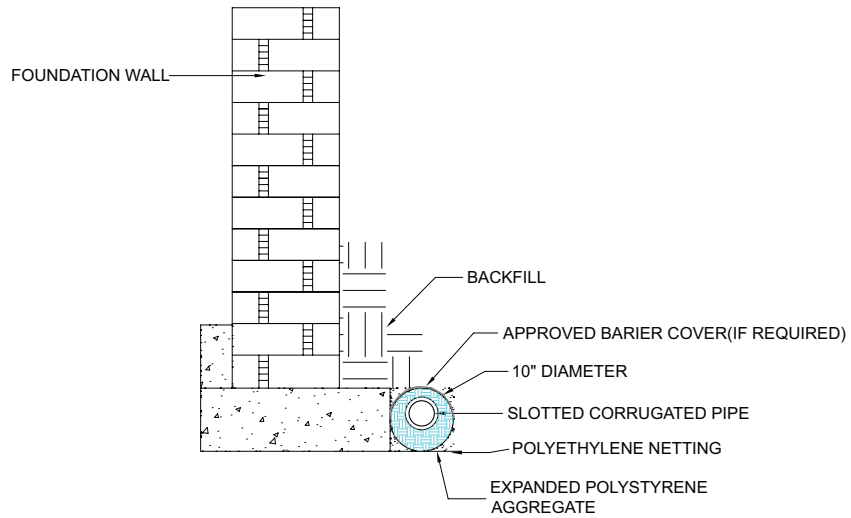
# EZflow Inspection

Septic tank, header pipe or D box, trench bottom, grade, depth, and cover shall be in accordance with state rules and regulations unless otherwise specified.

Four-inch septic pipe units are self leveling. No barrier cover shall be used in Texas.



## Foundation Drain Detail





**INFILTRATOR<sup>®</sup>**  
systems inc.

6 Business Park Road • Old Saybrook, CT 06475 • 800.689.7759