

Installation Instructions for EZflow Systems in Oklahoma



Oklahoma Department of Environmental Quality 252-641 has given an alternative and/or innovative approval for **EZflow** products.

Local health departments must approve the use of proprietary products in accordance with the requirements of their individual county sanitary codes.

A single pipe bundle contains a four inch perforated pipe surrounded by EPS aggregate and is held together with polyethylene netting. A single aggregate bundle contains aggregate only and is held together with polyethylene netting.

Materials and Equipment needed

- **EZflow** Bundles
- **EZflow** Barrier Paper
- **EZflow** Internal Pipe Couplers
- Pipe for Header and Inlet
- Backhoe/Excavator
- Laser, Transit, or Level
- Shovel & Rake

Installation Instructions

The instructions for installation of **EZflow** products are given below. All sites must meet the design, construction and installation requirements and Location & Separation distances as noted in Oklahoma DEQ 252-641.

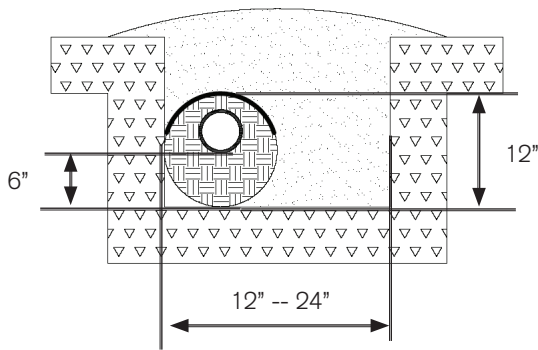
1. After the local health department has determined sizing, configuration, and layout for the **EZflow** systems, stake or mark with paint the location of trenches and lines. Be careful to set correct tank, invert pipe, header line or distribution box and trench bottom elevations before installation of pipe bundles.
2. Excavate trench to approved depth. Smearing of side-wall and bottom surfaces during construction is to be avoided. Any smeared soil surface should be raked to remove any glazing.
3. Place **EZflow** bundle(s) in the **EZflow** configuration approved by system design permit specified for the particular site. The top or center-most bundles containing pipe are joined end to end with an internal pipe coupler. Any additional aggregate only bundles that may be required, should be butted against the other aggregate-only bundles and do not require any type of connection.
4. Remove plastic **EZflow** stretch wrap prior to placing bundles in the trench(es). Remove any plastic wrap in the trench before system is covered.

5. If the soil backfill to be used is granular, cohesionless soil (such as fine dry sand), it may be desirable to place a barrier over the assembly to prevent the soil from infiltrating the system. This barrier may be of building paper or other approved cover material.
6. Trench bottom should be constructed level from end to end. On sloping ground, the trench shall follow a surface contour to maintain a uniform depth throughout the trench bottom.
7. The top of each absorption trench and media must be level. Level is considered to be the same elevation, within four inches (641-11-.2(h)).
8. **EZflow** EPS bundles are flexible and can fit in curved trenches as may be necessary to avoid trees, boulders, or other obstacles.
9. When installed in a trench, the trench should be dug to a minimum width of 12 inches up to a maximum of 36 inches. This not only saves labor in excavation, but also provides better load-bearing capacity after backfilling is complete.
10. Trench Systems shall have a minimum spacing distance of 6 feet on center per 641-11-.2(e).
11. The back-filling of the absorption field shall be performed in such a manner as to minimize the movement of heavy equipment upon the absorption field. Back fill shall be crowned over each trench to allow for settling.
12. Surface water shall be diverted around or away from the absorption field per 641-11-.1(d).

Repeat steps 1 through 12 as needed.

Approved EZ_{flow} Products

EZ_{flow} 1201P/1201P-GEO



Properties & Specifications

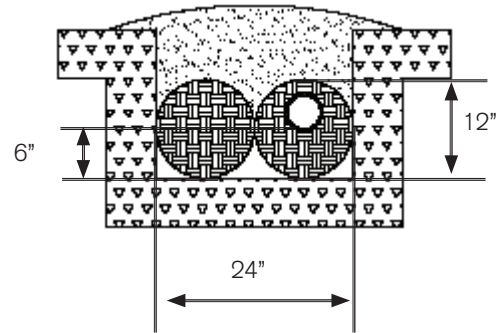
Overall System Height	12"
Invert Height	6"
Trench Width	12"-24"
Trench Depth	24"

EZ_{flow} 1201 Foot for Foot

This system was designated to replace the conventional method. The stone and pipe are replaced with a one piece unit, consisting of a 12" diameter aggregate bundle containing a 4" corrugated pipe. The pipe is situated so that there is 6" of aggregate below the pipe and 2" of aggregate above the pipe.

This system may be used to run your low pressure PVC pipe, allowing uniformity as well as consistency throughout the installation process.

EZ_{flow} 1202H/1202H-GEO

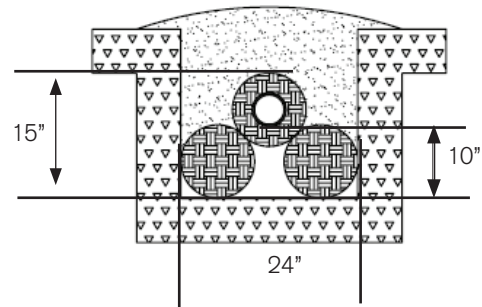


SIZING EXAMPLE: - 300 sq ft. required
300 sf X 0.35 = 105 lf required

Properties & Specifications

Overall System Height	12"
Invert Height	6"
Trench Width	24"
Trench Depth	18"

EZ_{flow} 1203T/1203T-GEO



SIZING EXAMPLE: - 300 sf required
300 sf X 0.35 = 105 lf required

Properties & Specifications

Overall System Height	15"
Invert Height	12"
Trench Width	24"
Trench Depth	21"

EZflow Inspection

An inspection by the county or district health department may be required after the sewage disposal system has been completed but before any portion of the system has been covered or placed in operation. It is the responsibility of the contractor, homeowner, or installer to notify the local health jurisdiction that the sewage disposal system is ready for inspection.

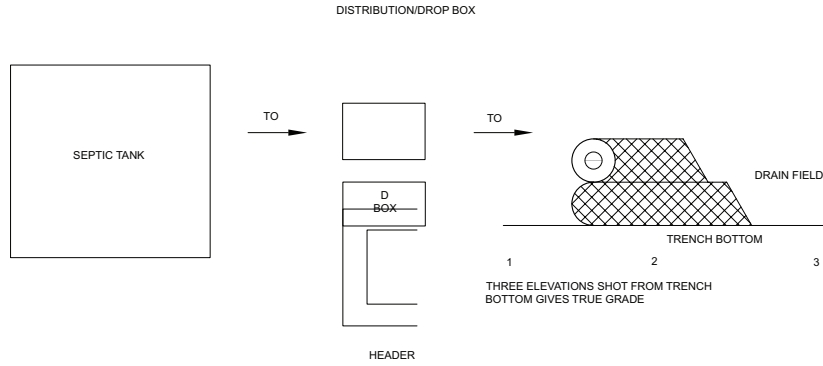
Septic tank, header pipe or D box, trench bottom, grade, depth, and cover shall be in accordance with state Criteria and county sanitary code unless otherwise specified.

Barrier over systems, if required, shall be of untreated building

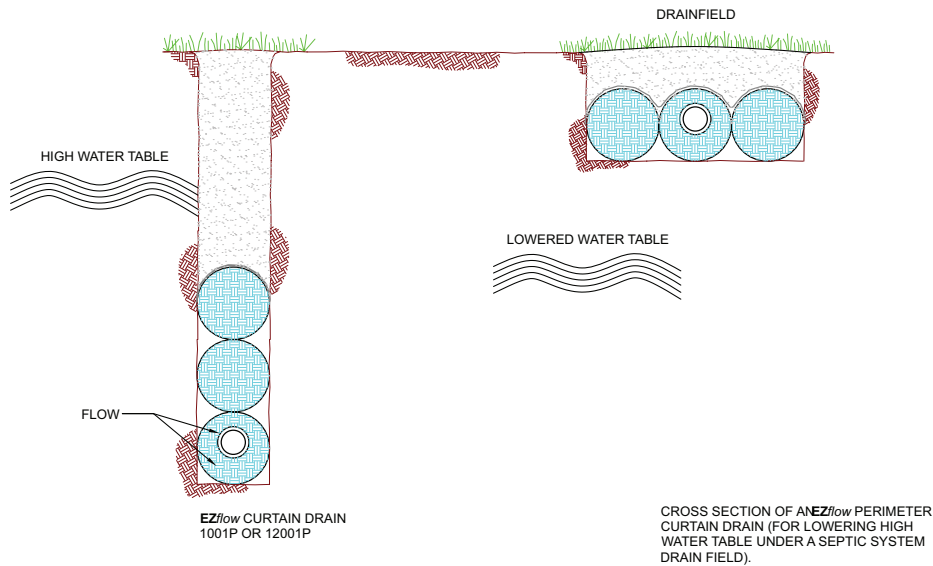
paper or manufacturer approved geotextile.

Sizing

The Absorption area (SF) necessary for a given site shall be sized based on maximum daily sewage flow (GPD) and the Permeability for the site. The total length of the trench required shall be determined by dividing the total absorption area (SF) required by the SF/FT of the product configuration being installed.



Perimeter Curtain Drain





INFILTRATOR[®]
systems inc.

6 Business Park Road • Old Saybrook, CT 06475 • 800.689.7759